

## Please Shovel Your Snow

We have already experienced a lot of snow this fall and winter. Please be a thoughtful neighbor and remove snow from the sidewalks as soon as possible. Remember that we have a lot of children in the neighborhood that walk to school and a lot of neighbors that enjoy walking the neighborhood. If snow is left to sit it causes icy conditions that can quickly become very dangerous. If you need assistance with snow removal consider contacting one of the neighborhood youth listed in the back of this newsletter offering such a service. Thanks for your help in keeping our sidewalks safe.

## Waste Connections Services for 2012

Woodbourne has trash and recycling services provided for all homeowners by **Waste Connections of Colorado**. Our regular trash pick up days are Mondays. To ensure prompt pick-up for all Woodbourne residents, Waste Connections requests that all trash be at curbside by 7:00 a.m. on Mondays. Trash should not be put out earlier than one day before trash pick-up days.

All trash should be placed in the trash carts. Not accepted items are: soil, sod, rocks, uncut branches, bricks, concrete, building materials, auto parts, and hazardous waste.

*continued on page 2*



## Note From the Board President

Due to the holidays, this newsletter goes to print prior to the December Board meeting. Therefore, this newsletter is always a little light on news. Information from both the December and January meetings will be included in the February 2012 newsletter.

Wow, it feels strange to be typing 2012. It's hard to believe that another year has passed. Thank you to everyone who has contributed to this community the last year, by volunteering for events, attending events, or even keeping your property looking great. The Board looks forward to a wonderful 2012.

We hope that you all are enjoying this festive winter season. Thank you to **Errin Elizondo** for planning the annual Holiday Hayride. We hope that many of you were able to join us for the great event.

Remember that from December 1, 2011 through January 15, 2012, Waste Connections will pick up any waste/trash associated with the holidays, including holiday trees, at no cost. If you have any questions or concerns, please contact Waste Connections at 303-288-2100.

The suspense is continuing but an announcement of the Holiday Lighting Contest winners is going to have to wait one more month. Again, since this newsletter went to press so early in December we cannot announce the winners at this time. Check your February newsletter for a list of winners. The neighborhood is looking great this holiday season!

Our next Board meeting will be January 18, 2011 at 7:00 p.m. at the Clubhouse. Please contact **Dawn Bates** with Management Specialists at 720-974-4254 with any questions. Thanks and have a great winter season!

—Carrie Kollar, President

## Frequently Asked Questions About Reserving the Clubhouse

**Who can reserve the Clubhouse?** Only Woodbourne homeowners can reserve the clubhouse.

**Is there a cost to reserve the Clubhouse?** The Board wants to support the current use of the clubhouse. However, due to many groups that use the clubhouse on a recurring basis and the high rate of use, the Board has implemented a minimum fee for clubhouse use. The fee is \$5.00 per hour, effective February 1, 2012. This issue is currently under review and may be changing. In addition, a \$150.00 deposit must be provided in case there is damage or cleaning that must be done following an activity.

*continued on page 3*



The Simms entrance welcomes visitors with festive decorations and holiday snow.

## Clubhouse Rental Fee - Update

As stated last month, a final decision will be made at the December Board meeting (held after press time). In order to give all homeowners fair notice of changes, changes will not go into effect until February 1, 2012.

**NEXT BOARD MEETING**  
**3RD WED. • JAN. 18TH**  
**7 P.M. • AT THE CLUBHOUSE**

**Waste Connections**, continued from front page

Waste Connections observes six holidays each year: New Year's Day, Memorial Day, Independence Day, Labor Day, Thanksgiving Day, and Christmas Day. If one of these holidays falls on or before our regular collections day, pick-up will be made one day later that week. If the holiday falls on a Saturday or Sunday no change will occur. In 2012, because of these holidays, trash will be picked up on May 30 instead of May 29, and September 5 instead of September 4. Waste Connections also collects recyclable trash through their single stream system. Recycling collection occurs every other week on the same day as trash collection. The list of recyclable products includes:

- Newspapers (including inserts)
- Magazines
- Catalogs
- Telephone books
- Corrugated cardboard
- Cereal boxes
- Tube and core stock
- Junk mail
- All other office paper without wax liners
- Aluminum food and beverage containers
- Glass food & beverage containers (clear, brown, or green)
- Ferrous (iron), bi-metal, and tin cans
- Plastic containers with the #1, 2, 3, 4, 5, 6, and 7 symbols
- Empty aerosol cans

All recyclable fiber products must be dry and free from food debris or other contaminating material. Tissues, napkins, paper towels, pet food bags, or other paper that has been in contact with food are not acceptable. All containers must be empty, free of metal caps, metal rings, plastic caps, and with less than 5% food debris. Specific materials that are **not accepted** are:

- Batteries
- Mirrors or plate glass
- Light bulbs
- Ceramics or porcelain
- Window or auto glass
- Glass cookware or bakeware
- Microwave trays
- Plastic bags or unnumbered plastic containers
- #7 PLA compostables
- Containers that have held motor oil or hazardous waste
- Household items such as cooking pots or clothes hangers

The general rule is to rinse out the containers and remove the caps or tops. Then toss the containers into the recycling cart. Finally, get the cart to the curb by 7 a.m. on the recycling Mondays.

Waste Connections allows for additional trash collections over and above your weekly cart as follows:

**Leaf Season** – October 1st through December 1st each year Waste Connections will take up to 15 bags at no additional cost per week for leaf and yard clean up season.

**Holiday Season** – December 1st through January 15th Waste Connections will pick up any waste/trash associated with the holiday including holiday trees at no additional cost.

Woodbourne provides a large item trash pick-up once a year. The day will be announced in the summer and is usually in June or July. This is an opportunity to get rid of old furniture, water heaters, and the like.

If you have any questions, you can contact Waste Connections directly at 303-288-2100. They are available Monday through Friday from 7:30 to 5:00.

**2011-2012 Board Members**

<b>Carrie Kollar</b>	303-431-5778	President
<b>Tammie Winkleblack</b>	303-933-2220	Vice President
<b>Rick Wilson</b>	303-972-9093	Sec./Treasurer
<b>Jay Hansen</b>	720-220-6805	
<b>Bill Goldstein</b>	303-972-6649	Parking Stickers
<b>Dawn Bates</b>	720-974-4254	Mgt. Specialists
	dbates@msiho.com	

**WOODBOURNE WEB SITE:** [www.msihoa.com](http://www.msihoa.com) Sign in and you will be directed to Woodbourne's community page. Management Specialists, Inc., 390 Interlocken Crescent, Suite 500

Broomfield, CO 80021

Home Owner Education: <http://www.hindmansanchez.com>

The WOODBOURNE newsletter is published and distributed monthly by the Woodbourne Homeowner's Association, a non-profit homeowner's association. Appearance of an advertisement in this publication does not constitute a recommendation or endorsement by the publisher or the association of the goods or services offered therein. The opinions expressed in this newsletter are those of the individual authors and not of the Board of Directors of your association or the publisher. Neither the Board, publisher, nor the authors intend to provide any professional service or opinion through this publication.

The deadline for articles and advertisements is the 15th of the month for the next month's issue except for the Jan. issue which is Dec. 6th. **All articles must be approved by the editor for publication, and as space permits.** To submit an article, please call a Board member or e-mail the editor at [jrcjanderson@hotmail.com](mailto:jrcjanderson@hotmail.com).

To place an ad, call Colorado Lasertype at **303-979-7499** or e-mail [getinfo@ColoradoLasertype.com](mailto:getinfo@ColoradoLasertype.com). For information go to [www.ColoradoLasertype.com](http://www.ColoradoLasertype.com).

**On-line Clubhouse Reservations**

Are you planning a party or considering reserving the clubhouse? Woodbourne's website now has a Reservation Calendar. You may view available dates and even place a reservation request any time, day or night. The request process is very simple, so please log on to Woodbourne's website at [www.msihoa.com](http://www.msihoa.com), and take a look.

The Clubhouse Reservation Calendar may be accessed directly by going to Resident Services and then drop down to Clubhouse Reservations. To request a reservation, click on the Request Reservation button located on the Clubhouse Calendar and fill out the on-line form. Management Specialist's Reservation Specialist will receive your request and contact you with information on confirming the reservation. Please give us a call at **303-420-4433** for additional assistance or to speak directly to your Reservation Specialist. Of course, if you ever need help you can also contact any Board member.

**National Blood Donor Month**

Bad weather, busy post-holiday schedules, increased cold and flu symptoms, and even the winter blues are common excuses for not donating blood during the winter months. January has been observed as National Blood Donor Month since 1970, and the need is just as important now as it was then.

**Reserving The Clubhouse**, continued from front page**Who do I contact to reserve the Clubhouse?**

Woodbourne's website now has a Reservation Calendar. You may view available dates and even place a reservation request any time, day or night. The request process is very simple, so please log on to Woodbourne's website at [www.msihoa.com](http://www.msihoa.com), and take a look. The Clubhouse Reservation Calendar may be accessed directly by going to Resident Services and then drop down to Clubhouse Reservations. To request a reservation, click on the Request Reservation button located on the Clubhouse Calendar and fill out the online form. MSI's Reservation Specialist will receive your request and will contact you with information on confirming the reservation. Please give us a call at 303-420-4433 for additional assistance or to speak directly to your Reservation Specialist. Of course, if you ever need help you can also contact any Board member.

**What happens if I don't get my reservation form and check in within seven days?**

Until the reservation form and check are received by Management Specialists, the reservation is incomplete. This means that another homeowner may take your date. In the past some homeowners have inquired about several dates and this prevented others from using the Clubhouse. Please be conscientious about completing your reservation.

**Will my deposit check be cashed?**

No. The deposit checks are held and will not be negotiated unless repairs or cleaning is needed because of your use of the facility. If not, checks will be returned within five days.

**How many people will the Clubhouse hold?**

The Fire Department has established a maximum occupancy of 37 people in the facility itself.

**Can I use the pool if I reserve the Clubhouse?**

Not automatically. Reserving the Clubhouse does not include use of the pool. You must contact the pool management company separately to use the pool. If extra lifeguards are required, a fee may be imposed.

**Can I bring in outside furniture to use in the Clubhouse?**

The Clubhouse has four tables and seating for eighteen. If you want to bring in additional chairs and furniture you may do so. You may also rearrange the furniture so long as you return it to its original condition when you are done.

**How late can activities last?**


All private functions must have the premises cleaned, restored to the original conditions, and vacated by 10:00 p.m. on Sundays through Thursdays or 12:00 midnight on Fridays and Saturdays.

**Can I serve food and beverages in the Clubhouse?**


Food and beverages may be served in the Clubhouse. However, no barbeque grills are allowed and no alcoholic beverages may be served or consumed by persons less than 21 years of age. If a majority of the attendees are under 21, the host must provide one adult chaperone for every ten "under 21" attendees. If the pool and Clubhouse are used in combination, NO ALCOHOL is permitted at all.

**What if I have additional questions?**

Contact any Board member. Names and telephone numbers appear in each Woodbourne newsletter.



**Foothills**  
Park & Recreation District



# FITNESS FRENZY

## FREE

### AT FOOTHILLS!

## JAN 2 - 14, 2012

Try out select Fitness Classes - FREE!

**303-409-2114**

**[www.ifoohills.org](http://www.ifoohills.org)**

Proven Performance ...  
Not Just Promises.



**Gary Manes**  
Broker Owner

---

## MANES & ASSOCIATES

---

OFFICE: (303) 973-7600  
CELL: (303) 870-9172  
EMAIL: [gary@garymanes.com](mailto:gary@garymanes.com)



\* ask about special rates for  
our Woodbourne neighbors!

**Special Events**

For the past year the Board has planned and run every social event with the help of very few volunteers outside of Board members. Certain events will no longer be held if the Board does not have volunteers to help. If you want these events to continue, please consider volunteering a little time to help. Thanks! Following is a list of the projected events and the current volunteer coordinator or need.

- **Easter egg hunt 2012**  
Need volunteers.
- **Annual garage sale 2012**  
Need volunteers.
- **July 4th bike parade 2012**  
Contact Lori or Jeff Lubthisophon, 303-942-0942, to help.
- **Holiday hayride 2012**  
Need volunteers.



If you can volunteer your time for any future event, or have any questions, contact any Board member to offer to help.

**Architectural Control Committee Corner**

As time passes, ACC guidelines may become outdated or in need of revision. If you see a guideline that might need to be reviewed, please contact Dawn Bates or Carrie Kollar. Thanks.

**DR. MARCIE GLASSNER**  
*Optometrist*

Woodbourne residents receive a  
10% discount on glasses with this ad  
*(not valid with vision insurance)*

11550 W. Meadows Dr., Unit F  
Littleton, CO 80127  
Phone: (303) 973-6333  
Fax: (303) 948-8103

**ONLINE  
SERVICE PROVIDER  
DIRECTORY**

**Find a professional to suit your needs  
while supporting local businesses!**

- Automotive
- Carpet & Upholstery
- Computer Services
- Financial Services
- Health Care
- Home Improvement
- House Cleaning
- Insurance
- Landscaping
- Music
- Painting
- Pet Services
- Plumbing
- Product Sales
- Realtors
- Recreation

**Call us to ask how to get added to one of the categories above!**  
**303-979-7499**

---

Visit our website for advertising information, ad rates, a map of the HOA newsletters we publish and details about our graphic design services.  
**www.ColoradoLasertype.com**

**Upcoming items for January Meeting**

At our January Board meeting, we will discuss the following:

- Any ACC guidelines in need of updating or revision
- Improvements or refurbishing of the clubhouse

Just a reminder that we often do not know what will be discussed at our meeting until shortly before. Our agendas and meeting minutes are posted on our website prior to our meeting and should contain more up-to-date information. You can also contact Management Specialists with any questions regarding upcoming or prior issues.

**2012 Budget and Monthly Assessments**

Just a reminder that monthly dues will not be increased for 2012. The Board approved a budget that continues the current amount of \$51 per month per household. If you are interested in setting up automatic payment, contact Management Specialists at 303-420-4433.

**Teen Services**

To add your teen's name, please email **Colorado Lasertype** at [getinfo@coloradolasertype.com](mailto:getinfo@coloradolasertype.com) and leave the following information: the **neighborhood you live in**, your age, phone number and the categories you would like included. Categories: **(B)** Baby-sitting; **(\*)** Red Cross Cert for CPR; **(L)** Lawn care; **(S)** Snow removal; **(P)** Pet & House sitting. No recommendation or endorsement of any of the names on this list is implied or stated by the homeowners association board or Colorado Lasertype.

Jennifer A.	17	B*/P	303-904-8394
Brittany B.	12	B/P/S	303-973-9084
Eryn D.	14	B/P	303-932-7457
Bree F.	12	B*/P	303-978-0533
Lindsey F.	16	B*/P	720-236-2580
Hailey G.	14	B*/P	303-933-7681
Jacob G.	14	P/L/S	303-979-7049
Lexi G.	14	B/P	303-979-7049
Tyler G.	14	P/L/S	303-979-7049
Dylan H.	13	L/P	720-496-5485
Emily H.	12	B*/P	720-323-6787
Kelly H. (male)	15	B/P/L/S	303-974-0546
Logan H.	12	P/S	720-220-4948
Ricky H. (male)	17	B/P/L/S	303-912-9418
Carley J.	13	B*/P	303-973-5268
Sydney M.	14	B*	303-904-7299
Nick P.	12	P/L/S	720-840-6713
Sarah P.	13	B*/P/S	720-840-6713
Heather S.	13	P/L	303-933-3964
Isaac S.	14	L/S/P	303-971-0702
Madeline S.	13	B*/P	720-922-0690
Amber S.	16	B*/P	303-979-2262
Briana S.	16	B*/P	303-979-2262
Justin S.	18	L/S	303-979-2262
Hannah S.	15	B*/P	303-973-3993
Noah S.	12	P	303-973-3993
Natalie Y.	15	B*	303-948-1716

**CLASSIFIEDS**

Classified ads are \$2.95/line for 2011. Contact **Colorado Lasertype** at 303-979-7499 or [getinfo@coloradolasertype.com](mailto:getinfo@coloradolasertype.com) to place an ad. To view our display ad prices, visit our website at [www.coloradolasertype.com](http://www.coloradolasertype.com). The deadline for placing a classified or display ad is the 15th of the month for the next month's issue (i.e., 15th of Sept. for Oct. issue), except the January issue, which has a deadline of December 6th.

**American Sprinkler and Landscape.** [asprinkler.com](http://asprinkler.com) or 720-312-3616.

**Graphic Design/Marketing.** Flyers, newsletters, ads, postcards, brochures & more. 25+ yrs exper. Nancy 303-972-4687.

Licensed **CHILDCARE & PRESCHOOL.** Mon-Fri from 7:30am-5:30pm. Lots of love, learning, and fun! 303-263-5681.

Winter **air duct cleaning** and **chimney cleaning** for your home. 720-299-7782.

**FT fireman looking for part time work.** I can do all your handyman projects for less than you would expect. I work by the hour and do not upcharge for materials. You know exactly what you pay for! Sean 720-320-1177.

**PARTYLITE CANDLES & Accessories.** Contact **Jan** at 303-979-3880 or [www.partylite.biz/janderby](http://www.partylite.biz/janderby)

**Crystal Window & Blind Cleaning!** Chandeliers & mirrors. Refs, 20 yrs exp. Feel good with **clean windows.** Call NOW-avoid the rush! Bill & Jerry 303-922-4655

**Small Paint Jobs Only 720-331-7032**

Companion care. Cooking, light house-keeping, errands, & doctor apmnts. CPR & first aid certified. Salina, 303-437-2936.

**Drywall and Basement Finishing Services.** 26 years experience. Gary 303-829-6363

**Mike the Plumber -** Your reliable neighborhood plumber for 14 yrs. Competitive rates. Free estimate. 720-422-8139

**Driveway Caulking - Concrete Repairs.** Avoid costly replacement. Call Sean 720-422-4236. [www.ideal-restoration.com](http://www.ideal-restoration.com)

**Aminals Pet Sitting Service:** Pet sitting (in your home). Bonded & ins. Refs. avail. Call Nancy at 303-335-6237

**Highlands Pride Painting- 303-738-9203**

**OB PAINTING.** Interior/Exterior. Get it done now! Free Est. Rob: 303-986-8198

**Tree trimming & removal-** Columbine Tree Svc. 303-979-5330. 33+ yrs exp.

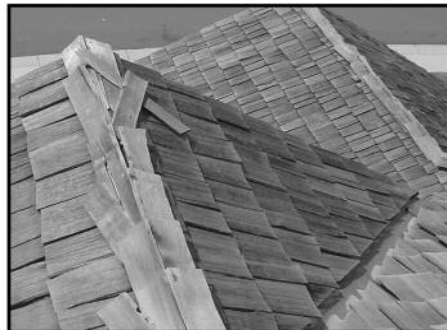
**Housecleaning.** Exper. dependable w/ great refs. Call Gigi to sched. an est. 303-523-0792

**Carpet, hardwood, slate, tile-** Installation, restretch & repairs. Bill at 303-794-1001

**QUEEN PILLOWTOP MATT/BOX SET.** Brand new in plastic. Retails \$529, asking \$265. Also, **NEW KING SIZE** pillowtop set. Retails \$699, asking \$385. 303-742-4860.

**A+ Home Improvement Services.** Pro-painting (ext. & int.), gutter & trim replacement & stucco. No job too small - we do it all! Basement & bath remodels, drywall repairs/texturing, decks, fencing, carpentry, doors, plumbing, electrical, tiles, carpeting & hrdwd flooring. BBB Member. Call A+ for fast, professional service every time. **Steve, 303-979-7858.** Major credit cards accepted. Refs., fully ins. & bonded. [www.A-Plus-Home-Improvement.com](http://www.A-Plus-Home-Improvement.com)

*"A vigorous five-mile walk will do more good for an unhappy but otherwise healthy adult than all the medicine and psychology in the world."* — Paul Dudley White



# Keep Your Roof Insurable

*Perform regular roof maintenance*

- ✓ Be proactive rather than reactive - address potential problem areas before they turn into major issues!
- ✓ Don't risk getting cancelled by your insurance carrier - take care of maintenance issues now!

- Hail Damage
- Wind Damage
- Maintenance
- Roof Certifications
- Free Estimates
- Locally Owned & Operated
- Member, Troubleshooter Network
- Preferred Contractor Most Ins. Companies

**Call Today!**  
(303) 841-8200

**AGAPE CONSTRUCTION & ROOFING** ∞  
Wood Shake Specialist

**Call Today!**  
(303) 841-8200

## Go-ped and Scooter Rules

During the holidays it isn't surprising that scooters frequently end up as presents for children and teenagers in the neighborhood. Sometimes they're called "go-peds" or "mini-bikes." Other names include Razor E-Punk, Razor E-scream trike, Razor Electric, Kamikaze boards, and Rad 2 Go. Although scooters are legal to own, there are lots of illegal ways to use them. Under current Colorado law, most of these scooters are defined as either low-power scooters or toy vehicles.

**Low-power scooters.** The definition of low-power scooter now includes any self-propelled vehicle with three wheels or less, no manual clutch, and an engine not exceeding 50 cc or 4,475 watts. Vehicles not in accord with these factors probably qualify as either a motor vehicle, motorcycle, or a toy vehicle. Low-power scooters have to be equipped with a headlight, a rear red reflector or tail lights visible from 500 feet, a bell or other audible signal device (not a siren or whistle) that can be heard from at least 100 feet, and a brake. Low-power scooters must be registered and have liability insurance. Operators of low-power scooters must have a valid driver's license (regardless of age) and there are additional requirements for 16-18 year olds. Low-power scooters can be operated on most roads in Colorado, including interstate roadways that allow bicycles. Low-power scooters are not allowed to be driven on the sidewalks and cannot exceed 40 mph. All low-power scooter operators must wear eye protection and operators and passengers under 18 years of age must wear a motorcycle helmet.

**Toy vehicles.** Most of the scooters you see for sale are considered "toy vehicles." A toy vehicle is any vehicle that has wheels and is not designed, approved, or intended for use on public highways or for off-road use and includes, but is not limited to, gas-powered or electric-powered vehicles commonly known as mini bikes, "pocket" bikes, kamikaze boards, go-peds, and stand-up scooters. Toy vehicles can only be operated on private property, with the owner's permission. Operating them on public streets, roadways, or sidewalks is illegal and can result in a ticket. Plus, a parent or guardian who knowingly lets his or her children operate a toy vehicle on a public street or roadway runs the risk of receiving an additional ticket.

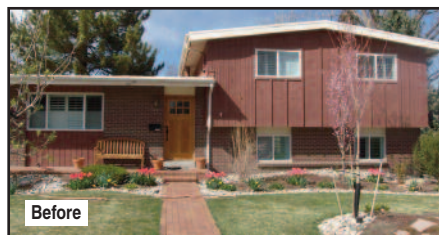
It is certainly disappointing for children and parents to find out that they can't ride their new scooter on the sidewalk, the cul-de-sac, or on the path in a local park. Further, it may seem silly to ticket children for riding a scooter on a sidewalk. However, deputies do respond to citizen's complaints about any traffic issue, including scooters, and frequently issue warnings and tickets. The most important thing to consider is that there are serious safety issues that come into play when children operate motorized vehicles around other traffic.

## Violation Report

All reported violations for mid-November through mid-January will be included in the February newsletter.

# JP HOME EXTERIORS

Windows • Doors • Garage Doors • Siding • Roofing



JPHomeExteriors.com

**303-961-5319**

Jasen@JPHomeExteriors.com

**Attic  
Insulation**

### We specialize in working with insurance

Customer satisfaction is our main priority. We stand behind our product install with a 5 year labor warranty, giving you the piece of mind you deserve. We at JP Home Exteriors know what a big investment this is for the consumer and we aim for excellence in its highest degree. After we are finished with taking care of you, we guarantee you will want to tell the neighbors.

### WINDOWS

- Double Hung Window
- Sliding Window
- Picture Window
- Bow Window
- Bay Window
- Garden Window
- Casement Window

### DOORS

- Steel Entry Door
- Fiberglass Entry Door
- Sliding Patio Door
- Garage Door

### SIDING

- Vinyl Siding
- Soffit & Overhang
- Architectural Accents
- Insulation
- Shutters
- Stone
- Stucco
- Painting

### ROOFING

- Roof Tear Off
- Re-Roof
- Architectural Shingles
- 3 Tab Shingles
- Ice Guard
- Ridge Vent
- Gutters & Downspouts